



SIZE GUIDE

THIS SIZE CHART SERVES AS A GUIDE ONLY. EXACT SIZES MAY VARY DEPENDING ON INDIVIDUAL BODY STRUCTURE.
ASSOS APPAREL IS CUT ANATOMICALLY WITHOUT RESTRICTING MOVEMENT IN THE RIDING POSITION.
BIBS MIGHT PULL WHEN STANDING UPRIGHT – THIS IS NORMAL.

BODY TYPE

ASSOS HAS DONE YEARS OF RESEARCH TO MATCH THE DESIGNS PERFECTLY WITH YOUR BODY TYPE.

WEIGHT



MEASURE	KG	POUND
XS	<60	<132
S	<70	<154
M	<75	<165
L	<80	<176
XL	<85	<187
XLG	<90	<198
TIR	>90	>198

HEIGHT



MEASURE	CM	IN
XS	160 – 170	63 – 67
S	168 – 175	67 – 68.8
M	173 – 181	68 – 71.2
L	180 – 187	71 – 73.6
XL	185 – 189	72.8 – 74.4
XLG	190 +	74.8 +
TIR	–	

MEN

ASSOS CLOTHING HAS A VERY SLIMMING, ANATOMIC CUT. IF YOUR BUILD IS LESS THAN SLIM OR IF YOU LIKE YOUR FIT LOOSER, GO UP IN SIZE.



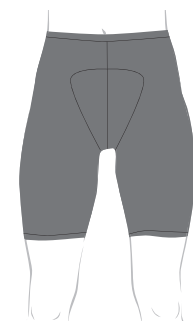
WAIST SIZE	CM	IN
XS	70 – 74	27.5 – 29.1
S	75 – 80	29.2 – 31.5
M	81 – 86	31.6 – 33.8
L	87 – 92	33.8 – 36.2
XL	93 – 99	36.3 – 38.9
XLG	100 – 106	39 – 41.7
TIR	107+++	41.8 +++



CHEST SIZE	CM	IN
XS	88	34.6
S	92	36.2
M	96	37.8
L	100	39.3
XL	106	41.7
XLG	112	44
TIR	118	46.4

WOMEN

ASSOS CLOTHING HAS A VERY SLIMMING, ANATOMIC CUT. IF YOUR BUILD IS LESS THAN SLIM OR IF YOU LIKE YOUR FIT LOOSER, GO UP IN SIZE.



HIP SIZE	CM	IN
XS	88	34.6
S	94	37
M	100	39.3
L	106	41.7
XL	112	44
XLG	118	46.4



CHEST SIZE	CM	IN
XS	80	31.4
S	85	33.4
M	90	35.4
L	96	37.7
XL	102	40.1
XLG	108	42.5



HEAD SIZE	CM	IN
0	48–53	18.8 – 20.8
I	53–58	20.9 – 22.8
II	58–63	22.9 – 24.8



HAND SIZE	CM	IN
XXS	17	6.6
XS	18	7
S	20	7.8
M	22	8.6
L	23	9
XL	24	9.4
XLG	26	10.2



SHOES SIZE	EU	US
0	36 – 39	3.5 – 5
I	40 – 43	6 – 8.5
II	44 – 47	9 – 13

SHOES SIZE	EU	US
Winter Booties + Rain Booties		
0	36 – 38	4.5 – 6
I	39 – 40	7 – 7.5
II	41 – 42	8 – 8.5
III	43 – 46	9 – 12.5